

The Great Toboggan Museum

Ramps are the core of this project : instead of being handled as a simple distribution constraint, they spread across the whole museum, creating a smoothly sloped path (4%), in three dimensions, from roof to ground.

This path is different in every point, creating various and rich spatial situations, with double heights, points of view in the building or on the city.

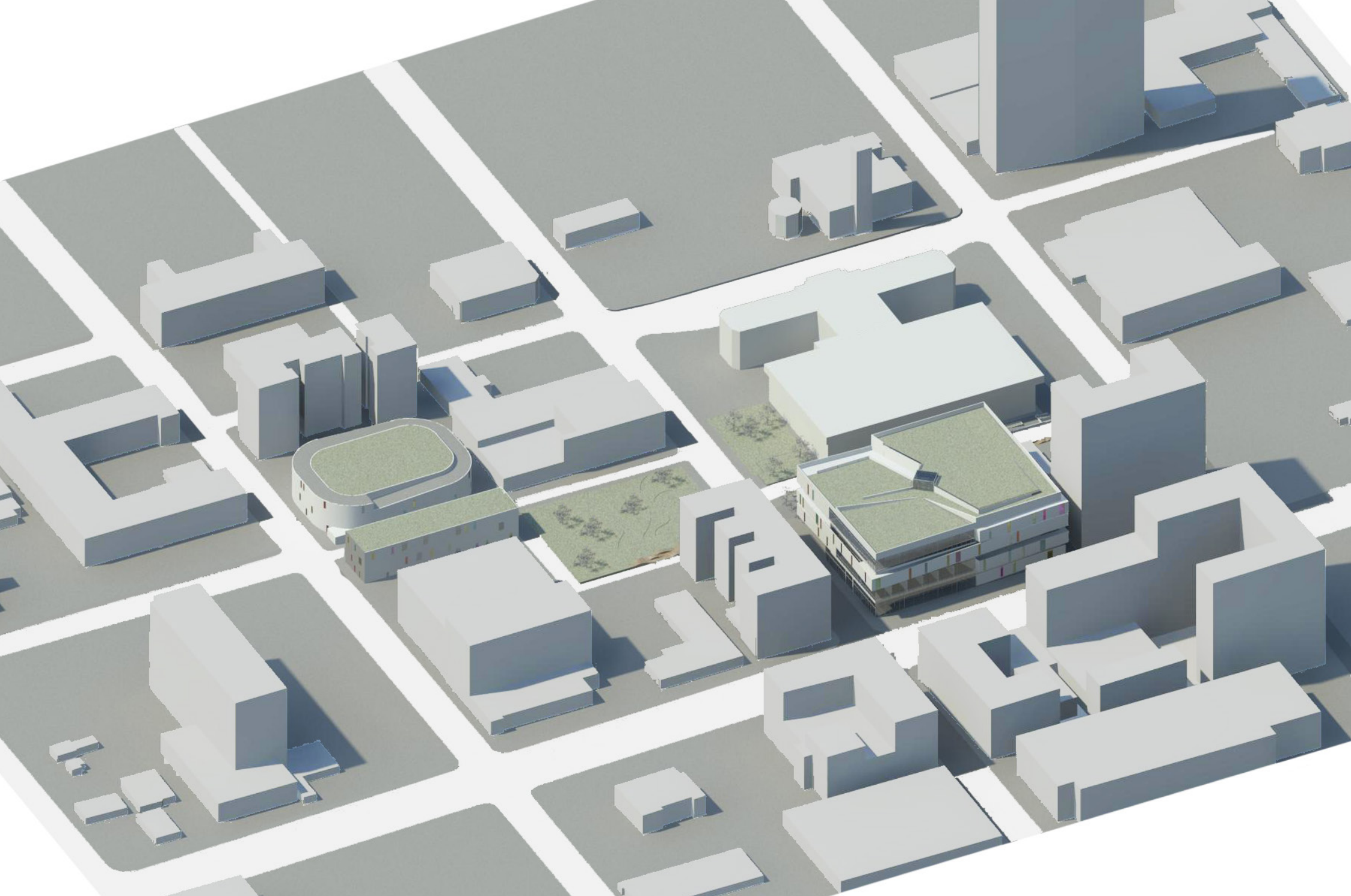
It links together all the levels but also receives its own exhibition spaces : on the second level it becomes a linear room, and on a portion between the first and the ground floor it has small platforms allowing an exhibition.

The levels themselves are thought as flexible exhibition sets, and are placed at the same levels than the landings of the ramp. Their slabs' thickness pro-

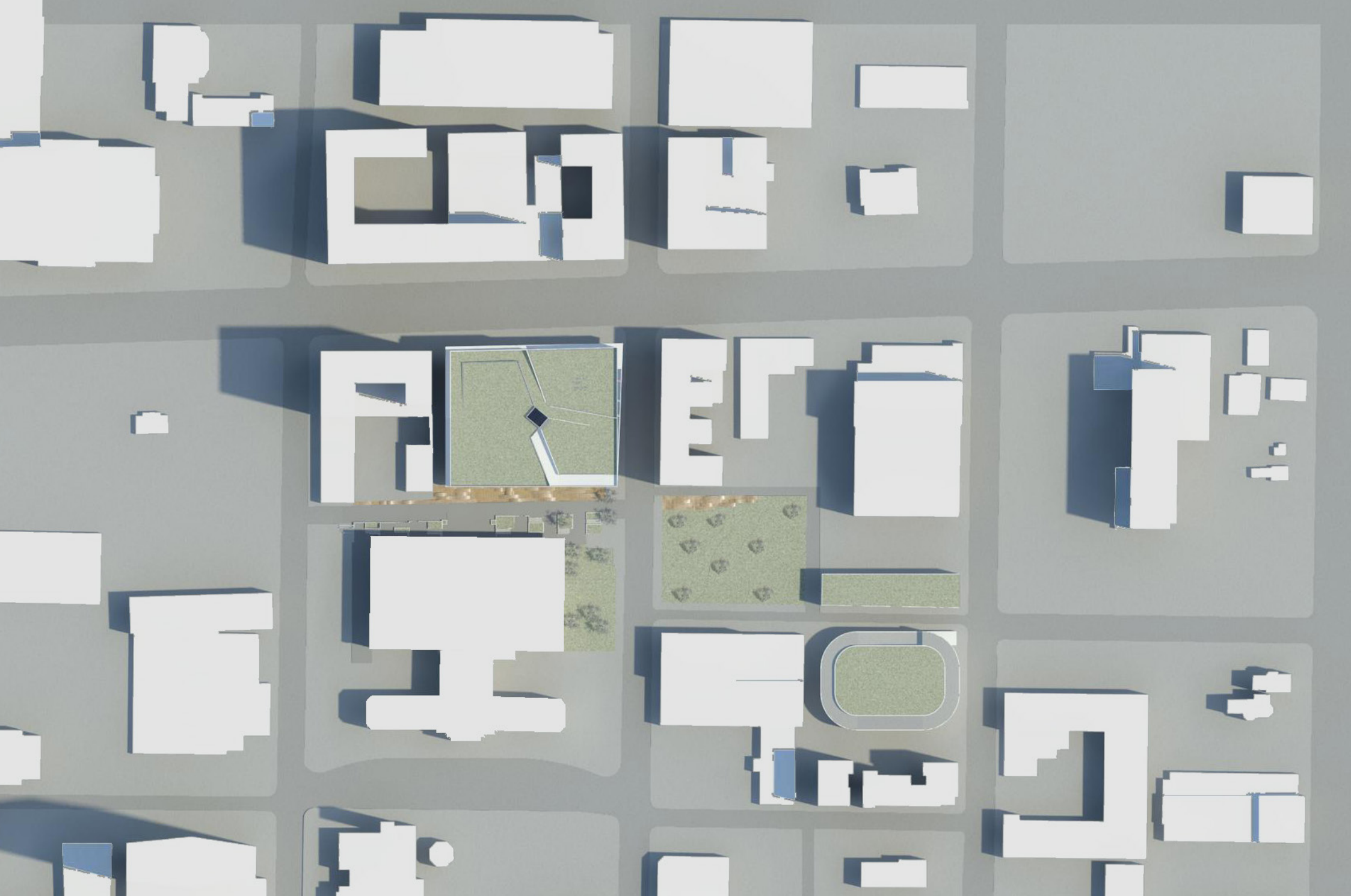
vides dropped ceilings that are able to receive flexible lightings and grab points for any installation.

The arrangement of the site aims to link the museum to the library by creating a common public space between, without destructing the current library arrangement. It also links the museum to the hi-tech incubator and the parking buildings. The use of the same system of wooden waves that cross from the Fourth to the Third street and the park creates a continuity through the site.

With their various curves and heights, they adapt to all types of pedestrian, and create a public game for children of several ages, reminding the function of the museum.



Axonometric view from north to south



Site plan



Hi-tech incubator and parking buildings from 3rd street

The wooden waves of the public space between the library and the museum cross the Third street and extend into the park , linking the hi-ech incubator and parking buildings.



Hi-tech incubator and parking buildings from 2nd street

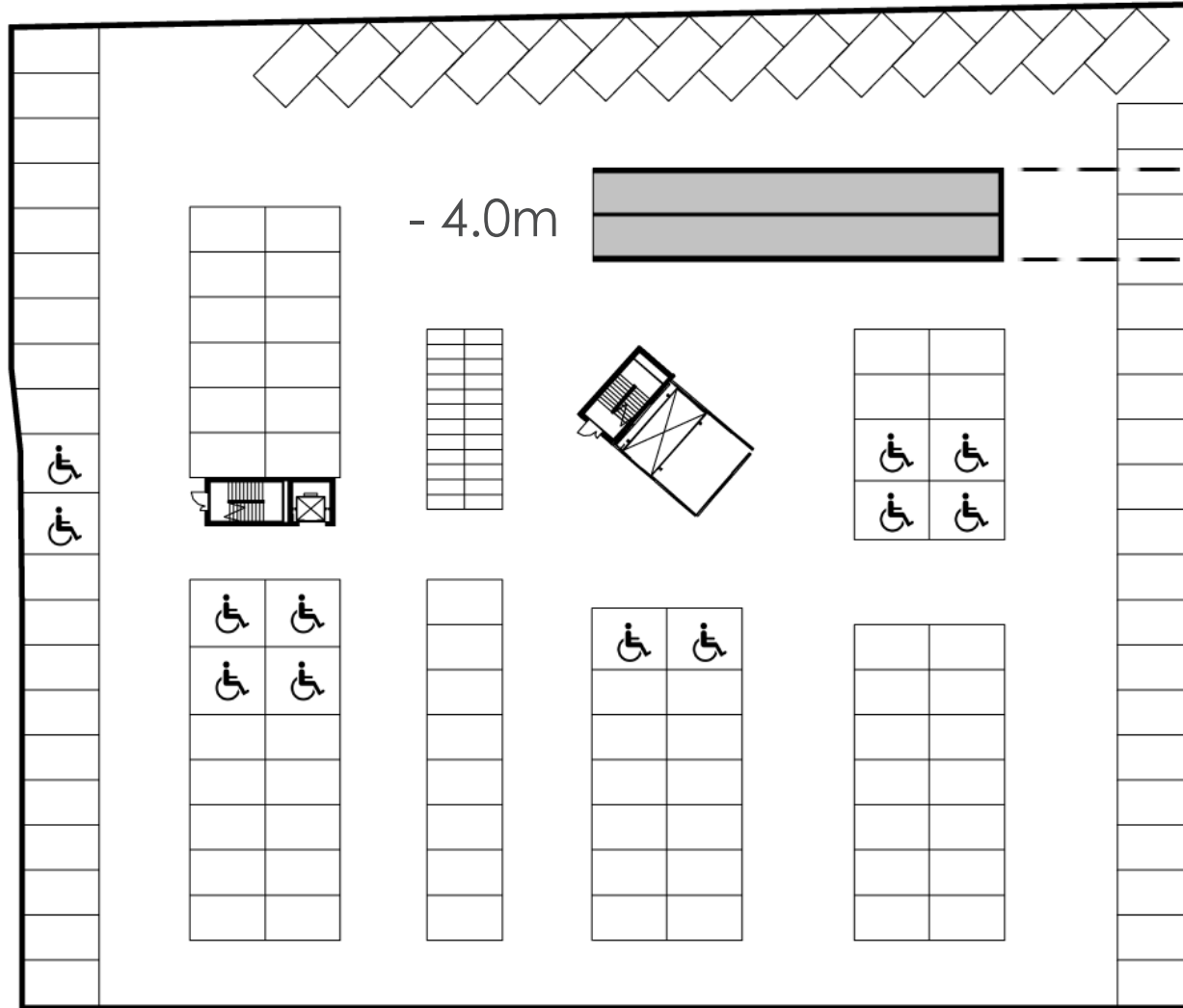
The parking and hi-tech incubator buildings use the same coloured windows in order to remind the nearby museum.



Park plan



Museum axonometry



Parking floor

A

Shop entrance

Parking entrance

Second entrance

+ 0.0m

Playing area

Hall

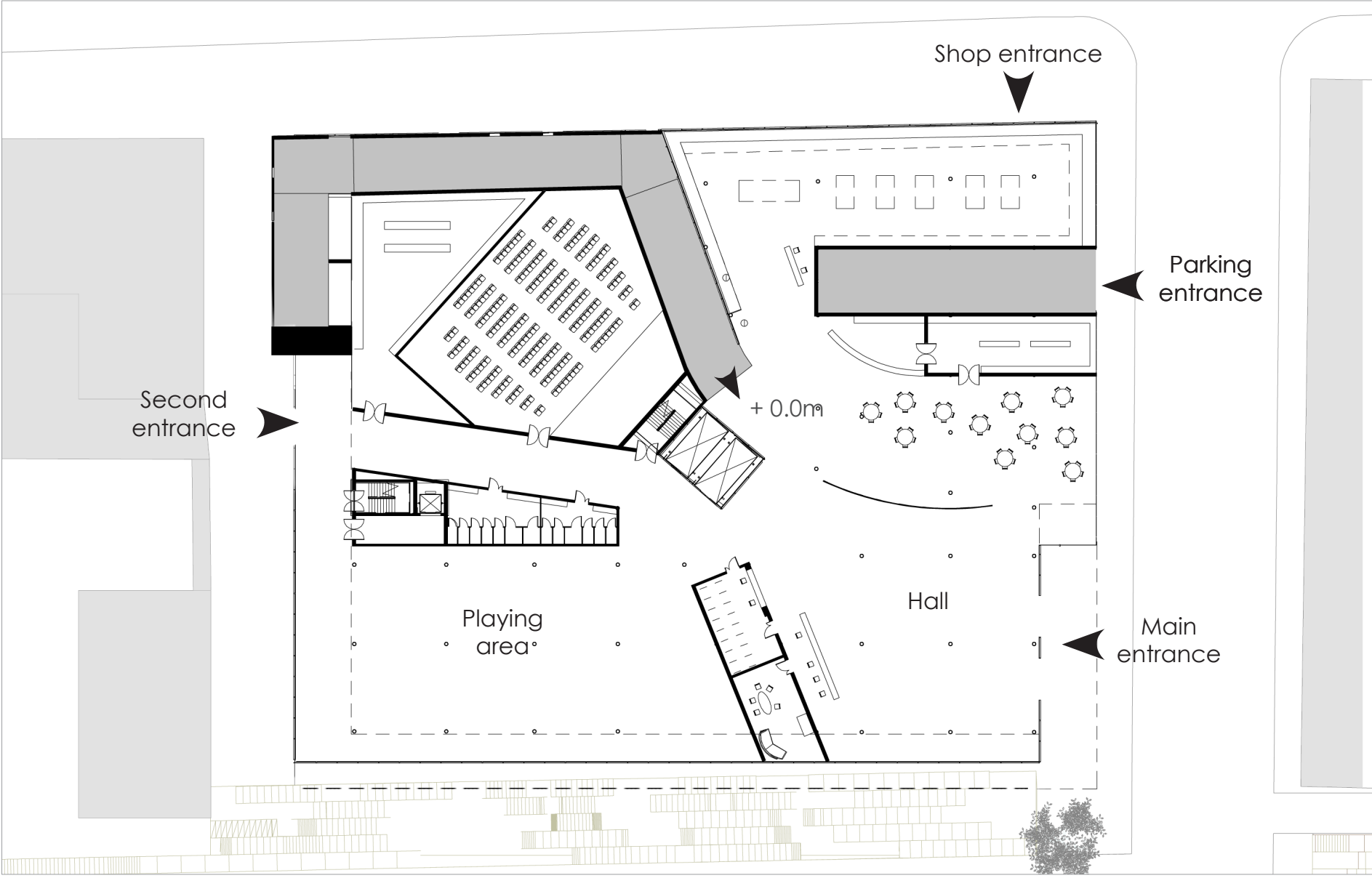
Main entrance

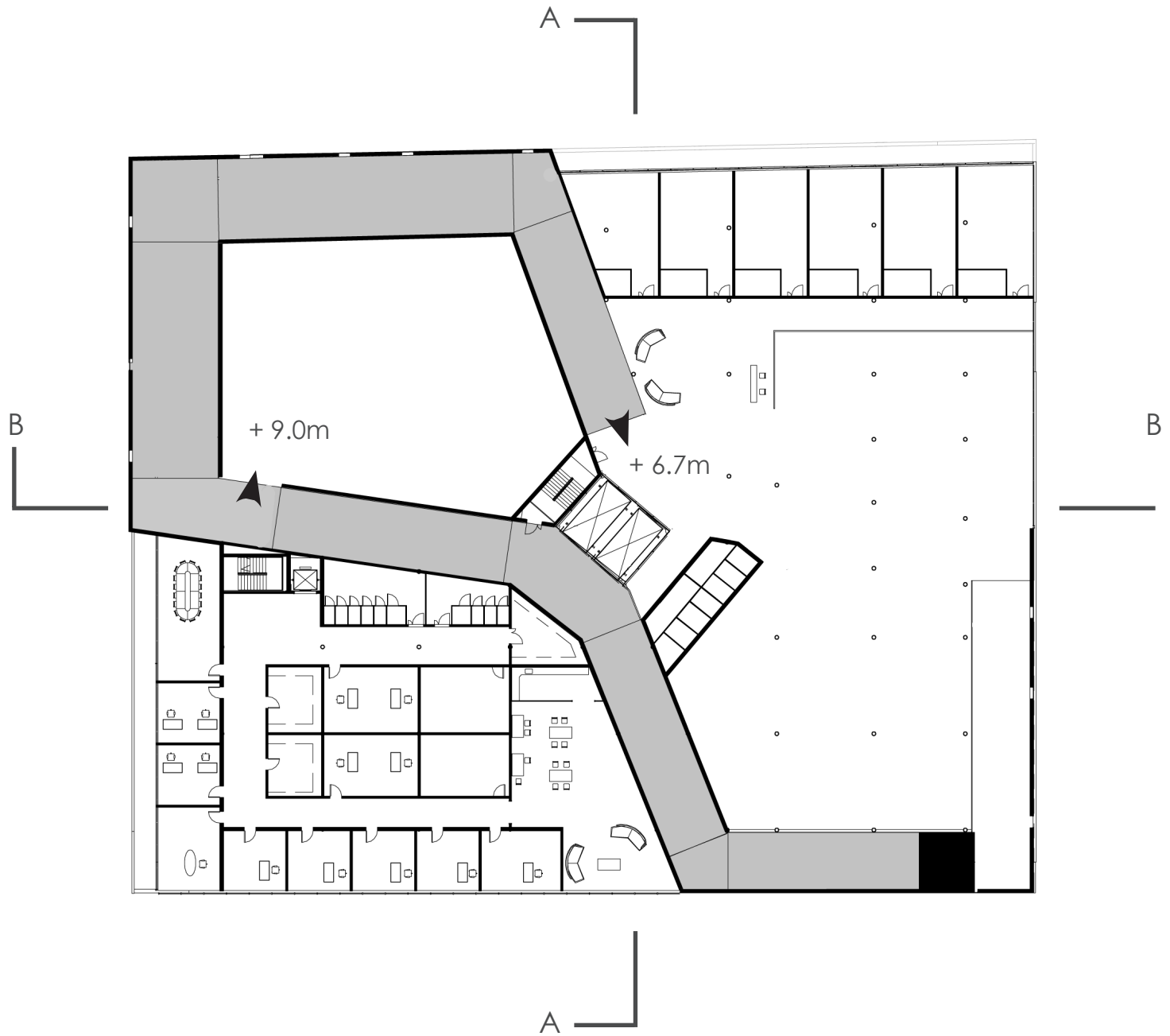
B



A

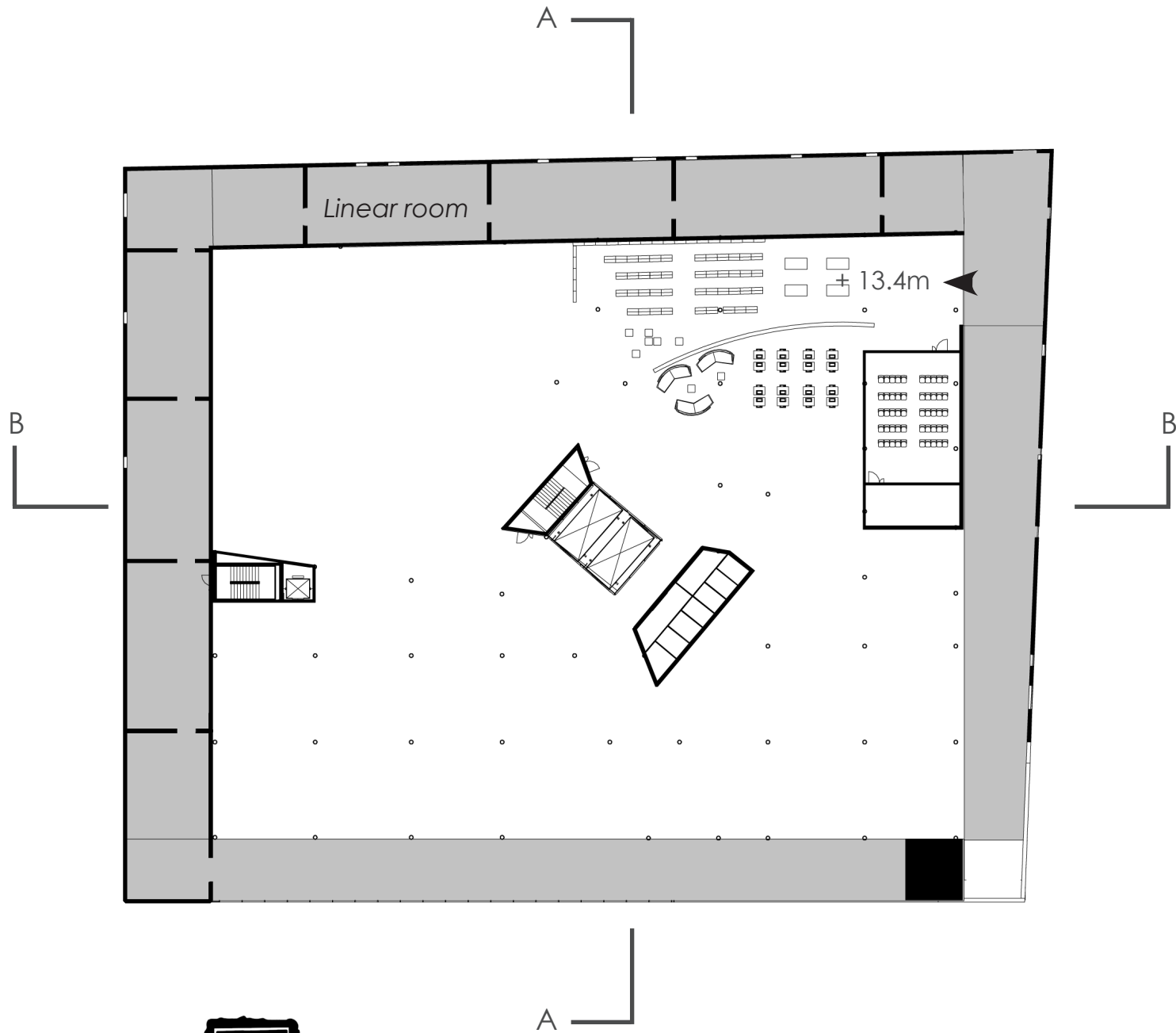
Ground floor





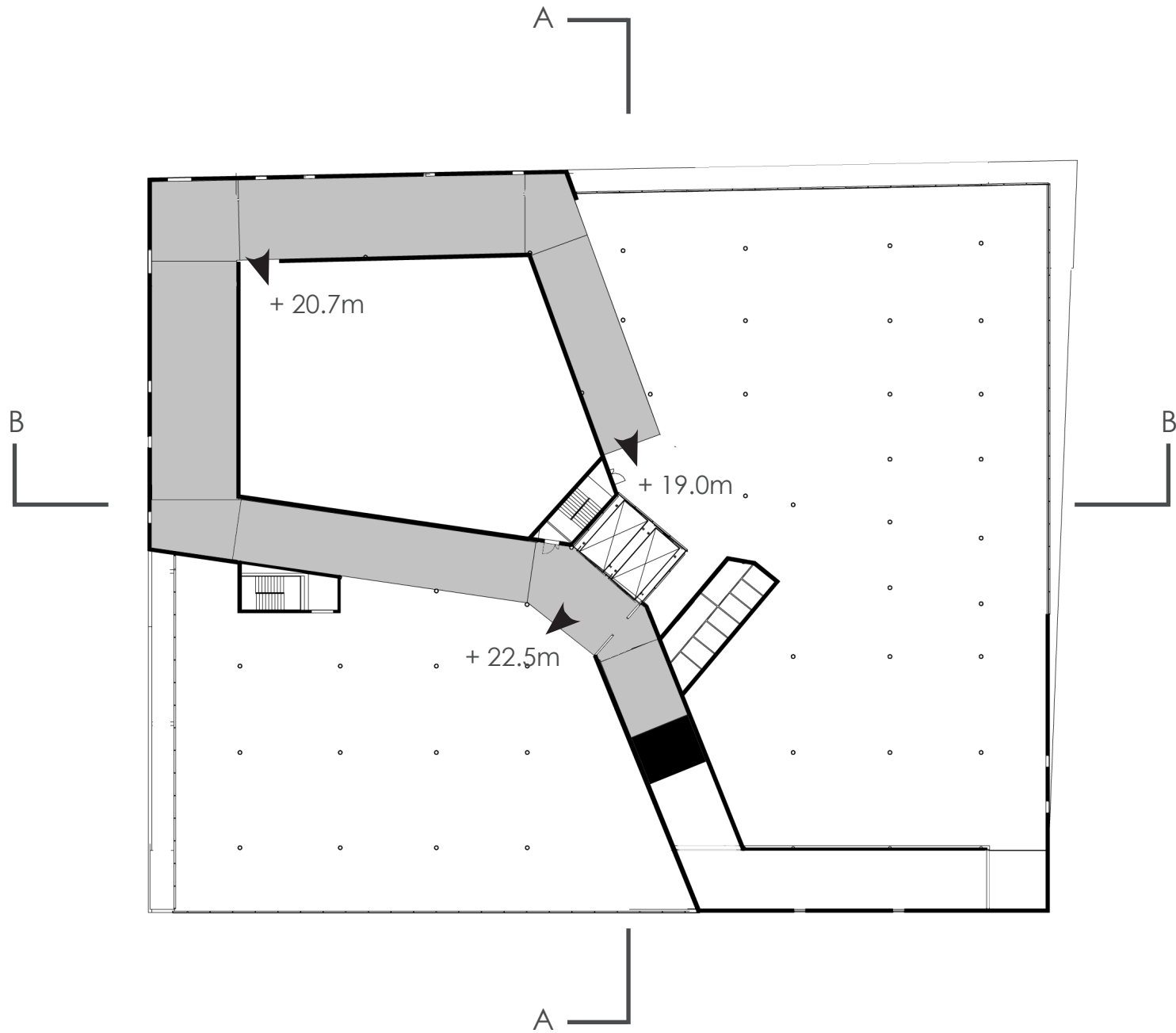
First floor : sets 1, 2 & 3





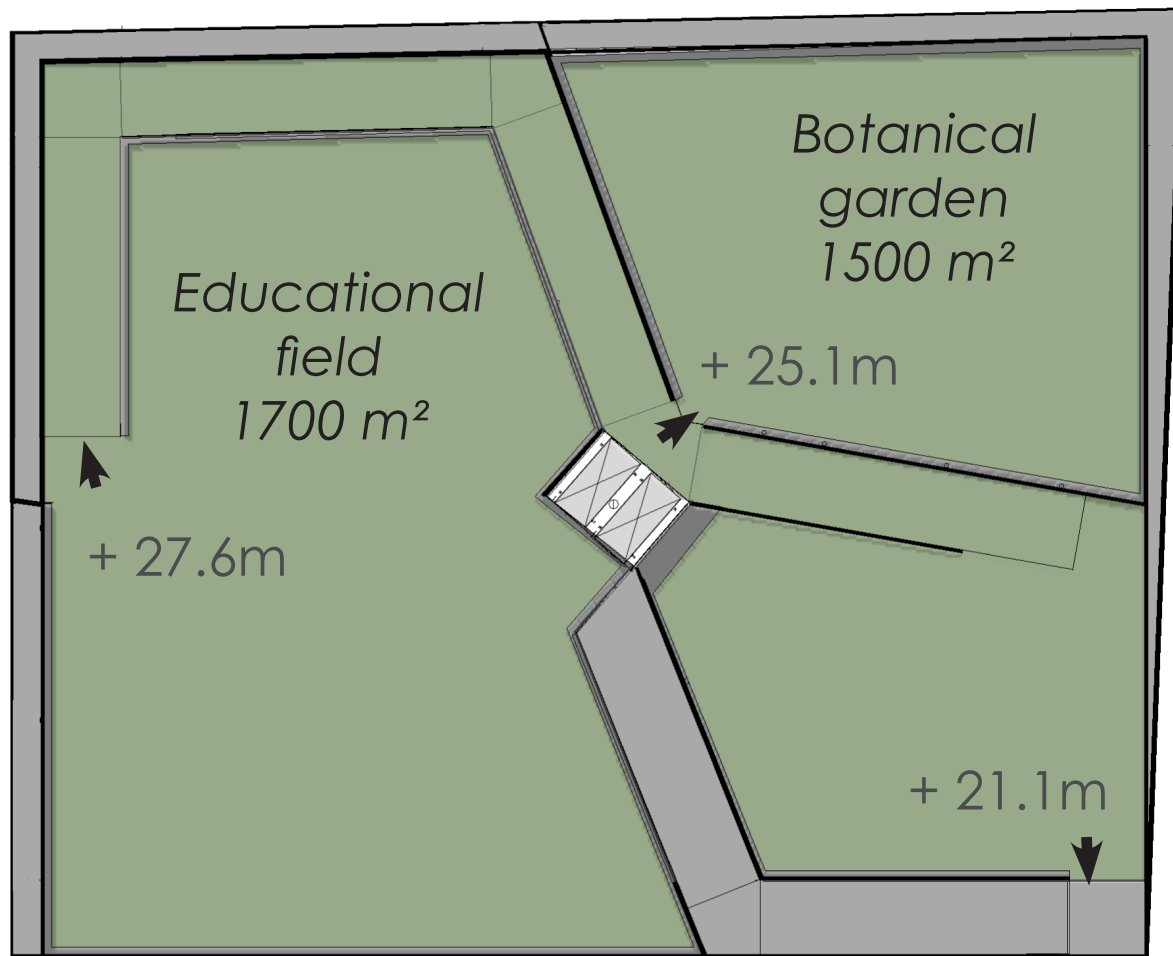
Second floor : sets 4, 5 & 6





Third floor : sets 7, 8 & 9





Top floor



*South & east facades
Ramps create a link between all the facades both outside and inside.*

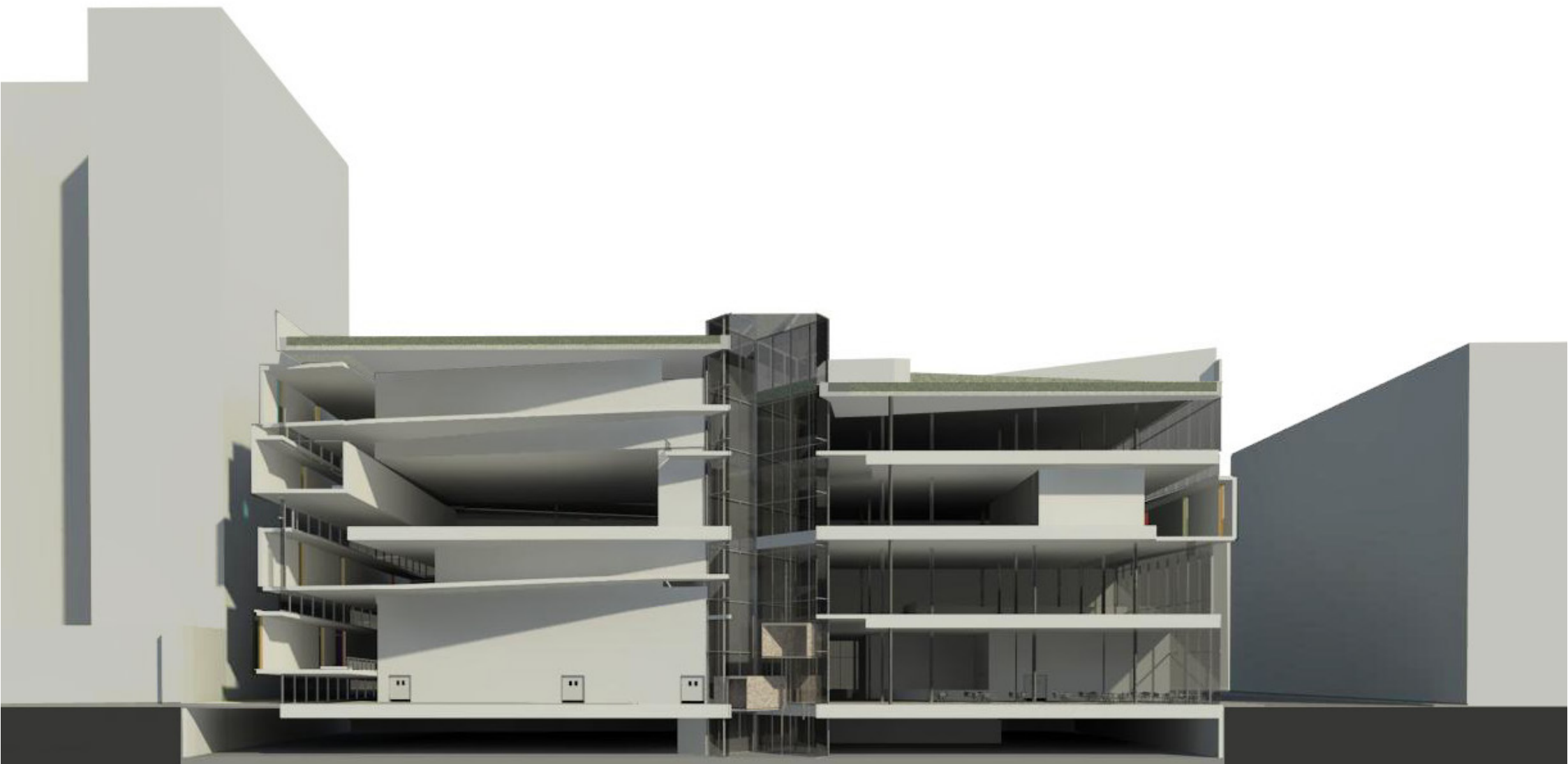


North & east facades

The coloured windows on the ramps' façades catch the attention of the passer-by and contribute to make of the museum an urban signal.



Section A north-south



Section B west-east



North elevation



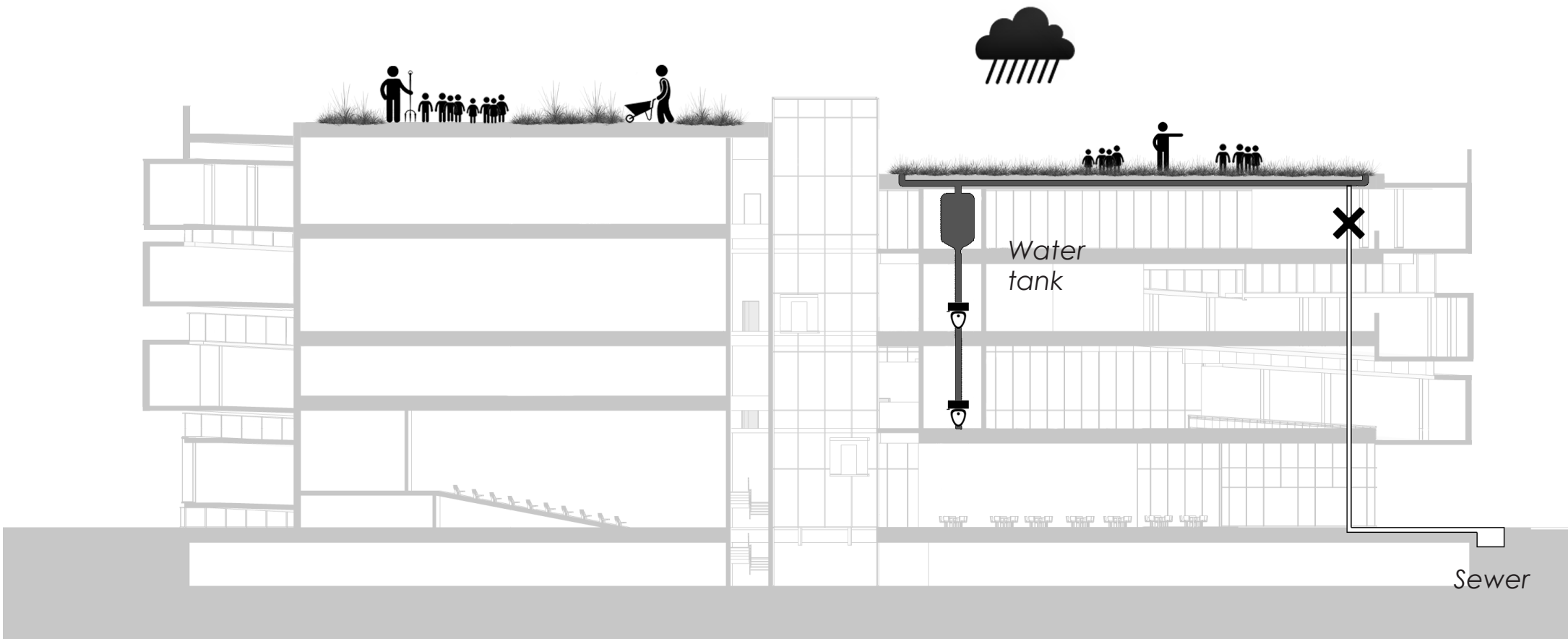
West elevation



South elevation



East elevation



Sustainable strategy

The great surface of roof is an opportunity to create a roof garden. The thickness of earth would lower heat inside the museum in summer and cold in winter. It would also hold back at least half the rain water, and the rest would be used in water closets, reducing the water consumption. In the end there would be no rain water left in sewers.

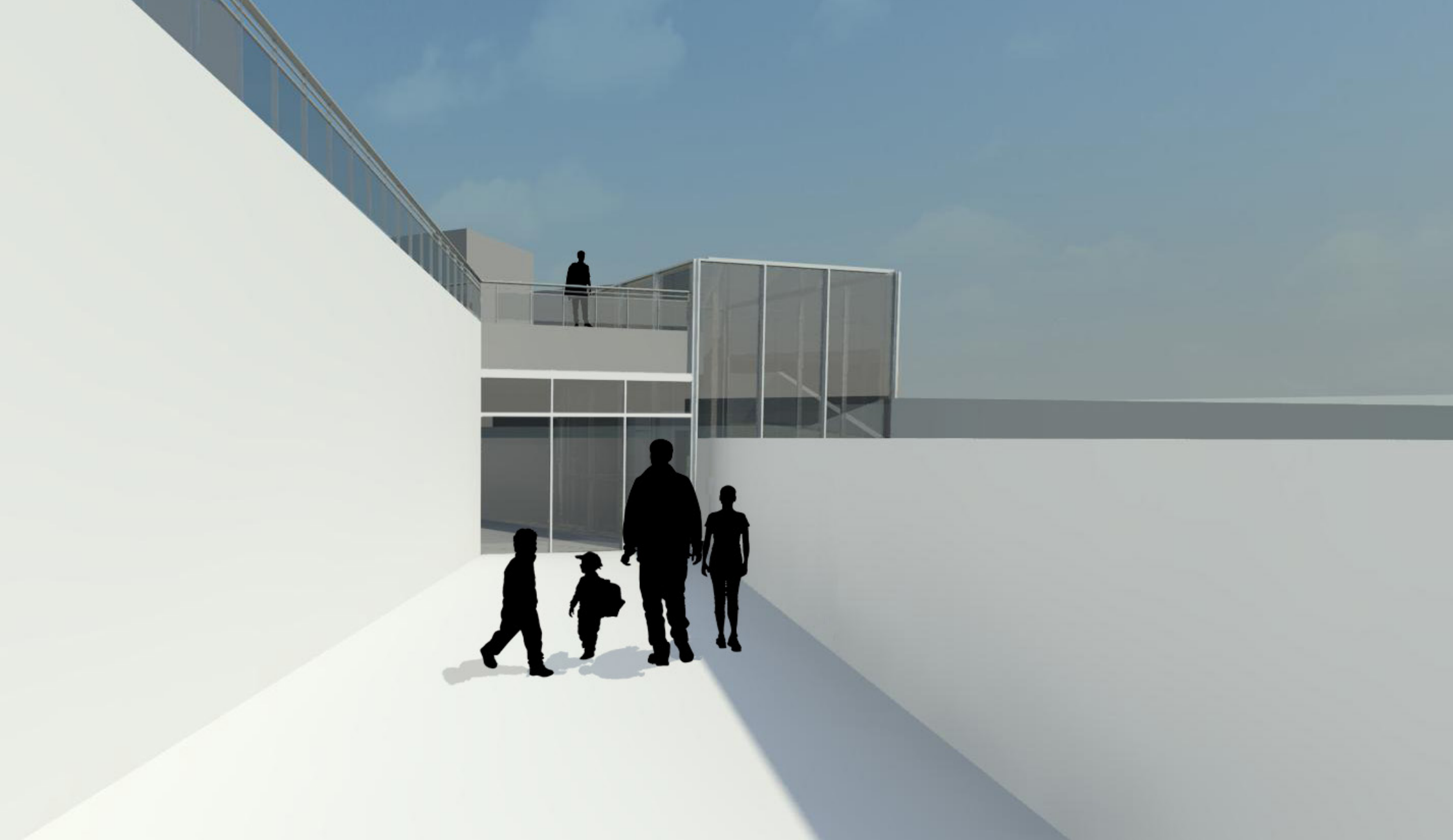
The roof garden would also have pedagogic goals :

- One part of the roof (1700 m²) would be used as a little field where children would be shown a way to move agriculture inside the city, reducing the transportation issues and giving an answer to the issues of urban sprawl.
- The other part (1500 m²) would be a botanical garden, planted with local species of trees, plants, and flowers in order to show the flora diversity.



View from entrance

Main elevators are straight in front.



View of the ramping on the roof leading to the beginning of the inside visit



View on the ramping arriving to first floor
Preschools are on the left.



View on a part of the ramping from first to ground floor

the ramp is on balcony above the ground floor and on the right small platforms allow the installation of small exhibitions.



View on the end of the ramping to the ground floor

Inside shop front and café on the left to make a break at the end of the visit.



Night view from south east